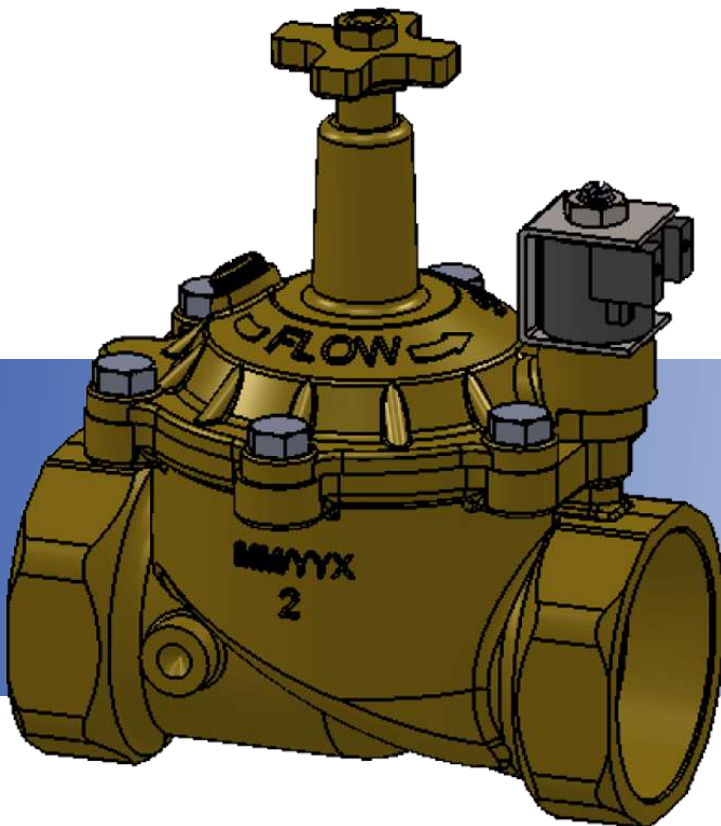


950 Series

Exploded Views



Buckner & Superior Irrigation

Buckner and Superior brands have a long-standing history within the irrigation industry. Now consolidated within The Storm Manufacturing Group, these brands continue to represent the performance and reliability that have been industry standards for nearly a century.

The Buckner Company was founded by W.A. Buckner in 1912 with the introduction of a patented slow-rotation sprinkler. The Buckner Company helped revolutionize the industry with new products such as the first hose-less irrigation system, the quick coupler valve, the hose swivel, and the sand-resistant bearing and cam-drive sprinkler. The famous Pebble Beach Golf Course was an early site of Buckner's innovative automated irrigation systems. The Buckner Company became part of Storm Manufacturing Group in 2000.

The Superior Controls Company, founded in Valencia, California by Allen and Powell Greenland, introduced the first diaphragm-operated remote control valve to the irrigation industry. With its extensive line of brass control valves, adaptors, and Sterling controllers, Superior has become a name known for quality and durability. Superior products are used today in a wide range of applications that include residences, municipal parks, sports fields, golf courses, nurseries, greenhouses, and agricultural fields. The Superior Controls Company became part of Storm Manufacturing Group in 2006.

Together, the Buckner and Superior brands continue to offer quality solutions for a wide range of irrigation needs. Our promise is to offer a reliable and affordable product accompanied by unmatched service and support.

Storm Manufacturing Group

Storm Manufacturing Group is a leading supplier of manufactured products that are sold into a variety of applications that include irrigation, water drilling, compressed air, and other industries. The firm is distinguished by a long-standing reputation for high-quality products, technical expertise, and exceptional service to its customer base, resulting from many years of experience in its markets.

Storm Manufacturing Group exists as a result of the consolidation of three highly-regarded manufacturing companies:

- Buckner Company, a manufacturer of irrigation products to markets including golf courses, municipal parks, sports fields, agriculture and traditional turf irrigation.
- Superior Controls Company, a manufacturer and pioneer of valves and controls in the sprinkler automation industry.
- Kingston, a manufacturer of hydraulic and air valves serving industries that include compressed air, floor cleaning, automotive, medical/dental and food service.

The history of Storm Manufacturing Group dates back to the infant stands of the irrigation industry, when Walter Storm founded the Western Brass company in Los Angeles in 1932. His company developed and manufactured irrigation and water products for many of the landscape irrigation industry pioneers. Over the years, the Storm family of businesses has manufactured quality products under the brand names of Western Brass, West Ag, Imperial, and Western Rainrol. These businesses have evolved to become what is known today as The Storm Manufacturing Group, proud parent company of the Buckner, Superior, and Kingston brands.

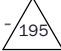


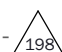
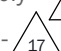
Model 950

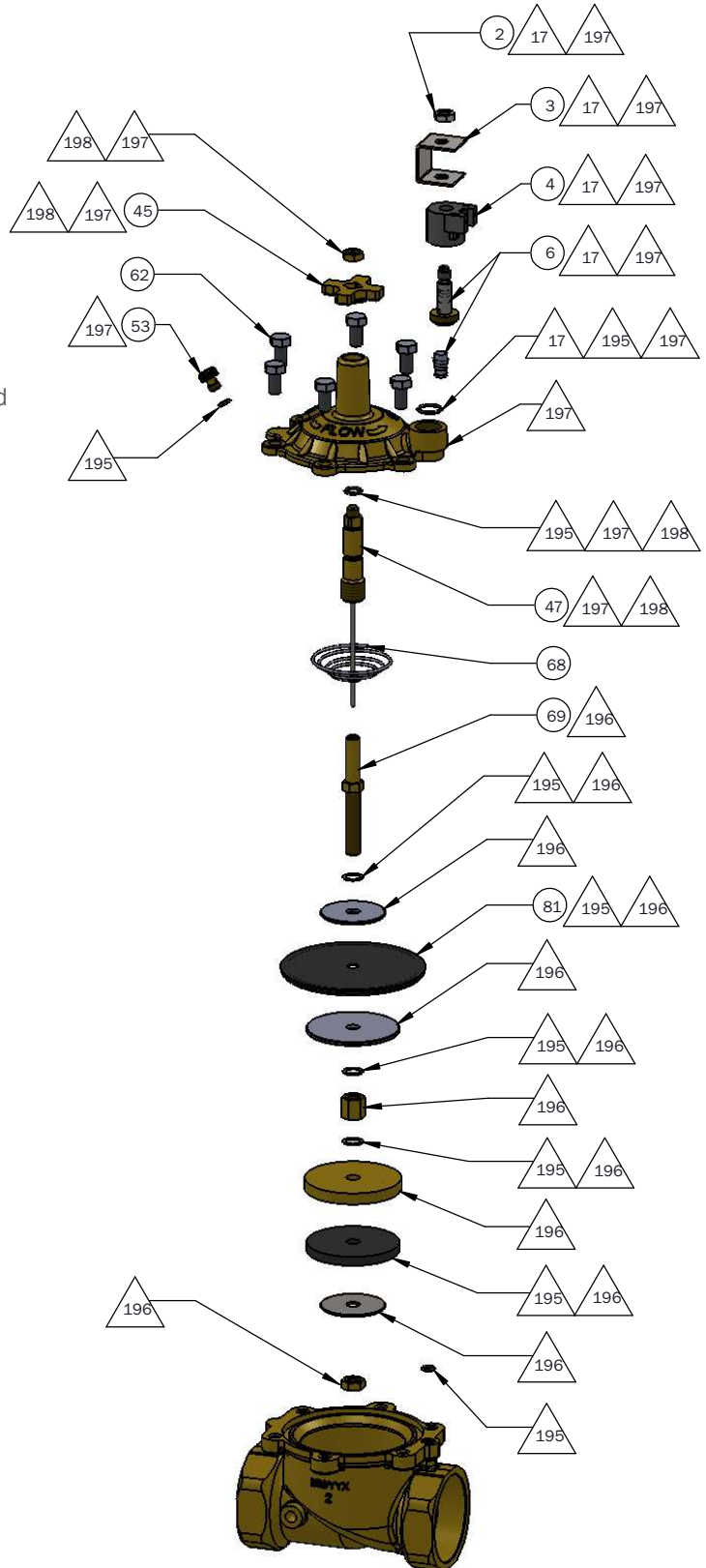
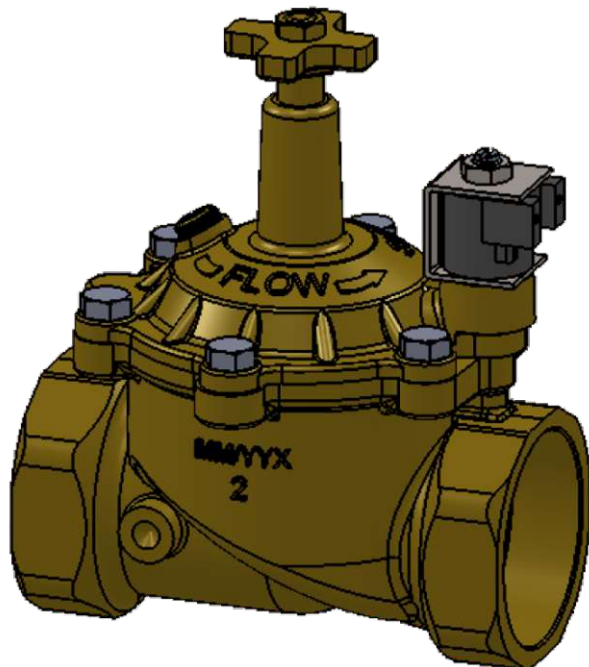
2" Model Depicted Below

Notes:

1. Index numbers are listed in numerical order on **Page 9** with corresponding part description, part numbers, and list prices.
2. Circular index numbers indicate that the part can be purchased separately.
3. Triangular index numbers indicate that the part is available as part of a sub-assembly or repair kit.

Sub-Assemblies & Repair Kits

- Repair Kits (all rubber & fiber parts) -  195
- Diaphragm Assembly -  196
- Top Assembly -  197
- Flow Control Assembly -  198
- Solenoid Assembly -  17



Model 950DW

2" Model Depicted Below


Notes:

1. Index numbers are listed in numerical order on **Page 9** with corresponding part description, part numbers, and list prices.
2. Circular index numbers indicate that the part can be purchased separately.
3. Triangular index numbers indicate that the part is available as part of a sub-assembly or repair kit.

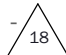
Sub-Assemblies & Repair Kits

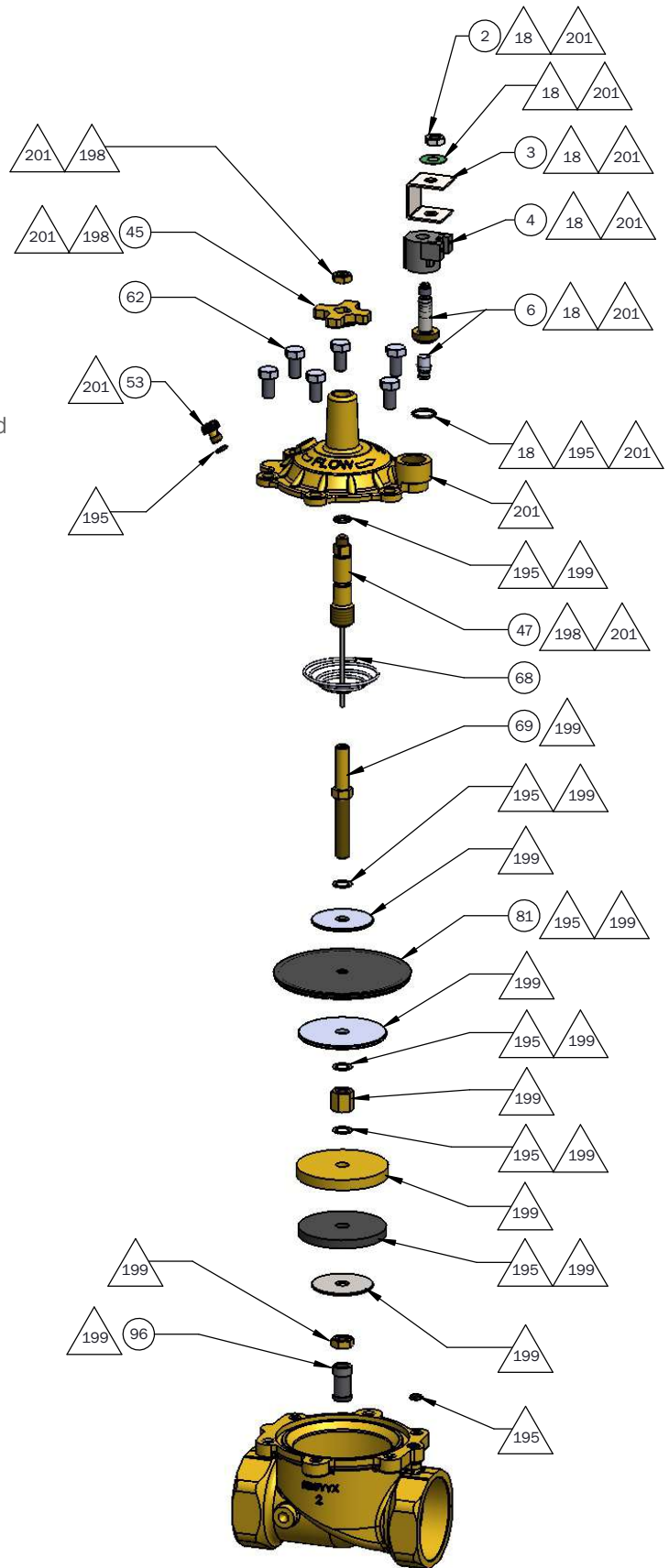
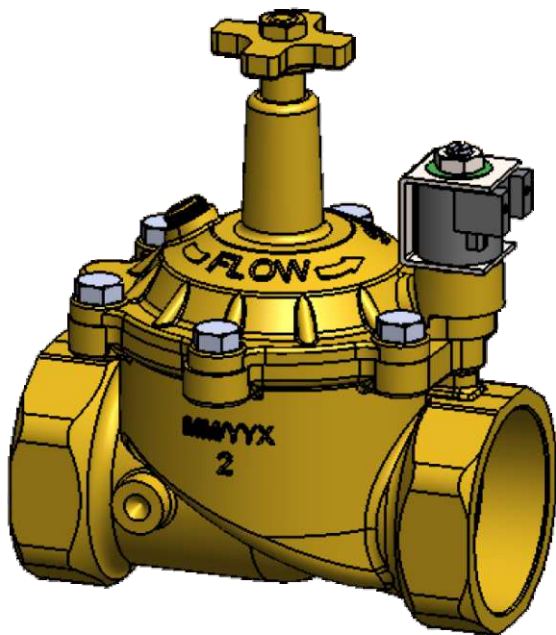
Repair Kits (all rubber & fiber parts) -  195

Diaphragm Assembly -  199

Top Assembly -  201

Flow Control Assembly -  198

Solenoid Assembly -  18



Model 950DWIB

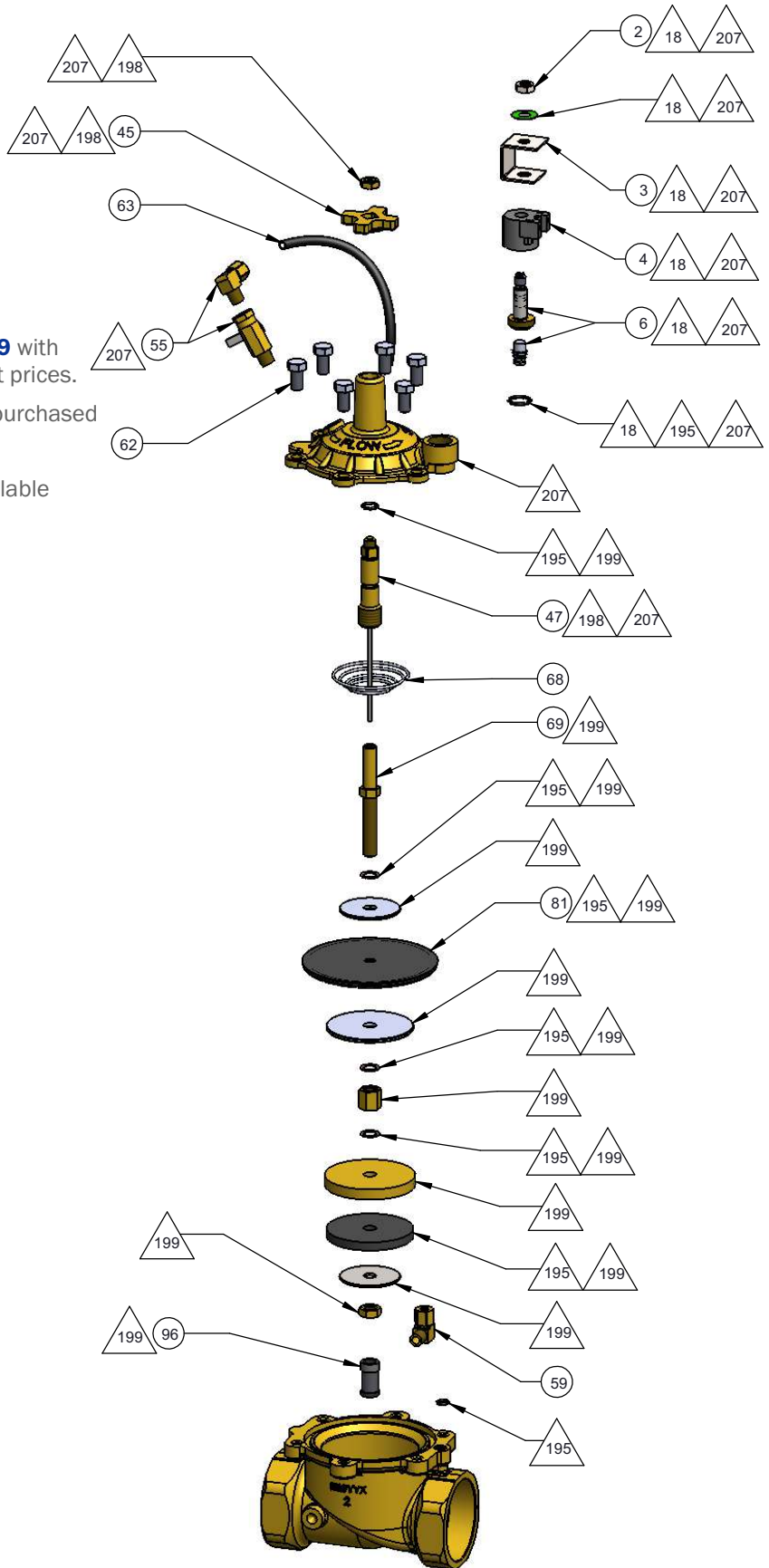
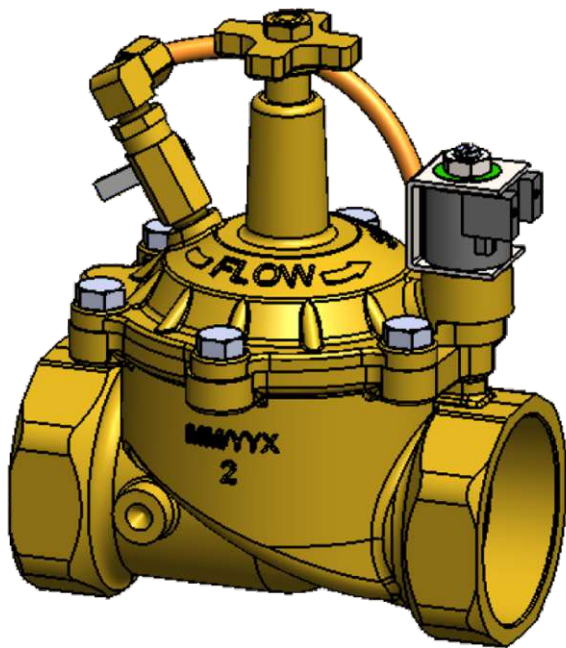
2" Model Depicted Below

Notes:

1. Index numbers are listed in numerical order on **Page 9** with corresponding part description, part numbers, and list prices.
2. Circular index numbers indicate that the part can be purchased separately.
3. Triangular index numbers indicate that the part is available as part of a sub-assembly or repair kit.

Sub-Assemblies & Repair Kits

- Repair Kits (all rubber & fiber parts) - 195
- Diaphragm Assembly - 199
- Top Assembly - 207
- Flow Control Assembly - 198
- Solenoid Assembly - 18



Model 950SD

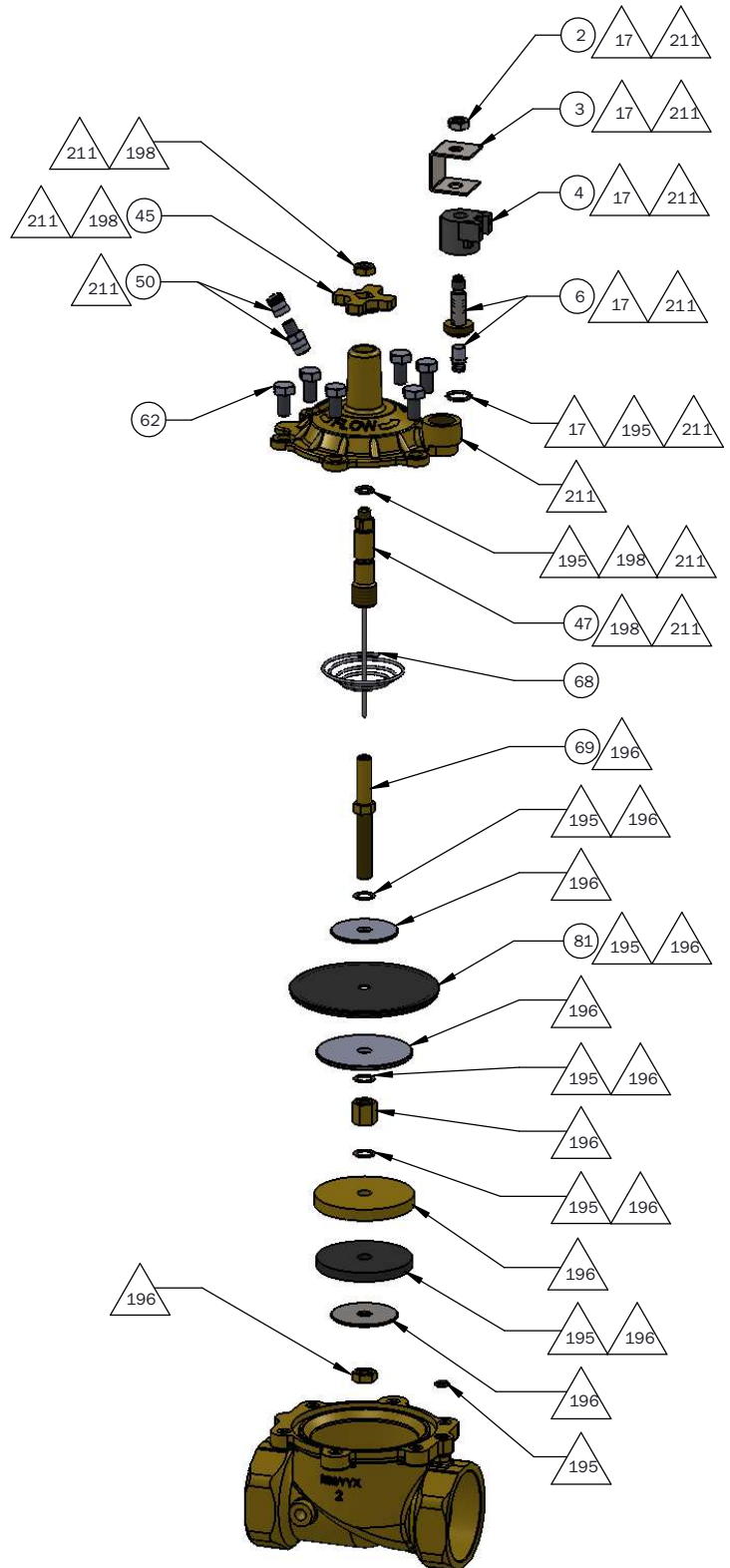
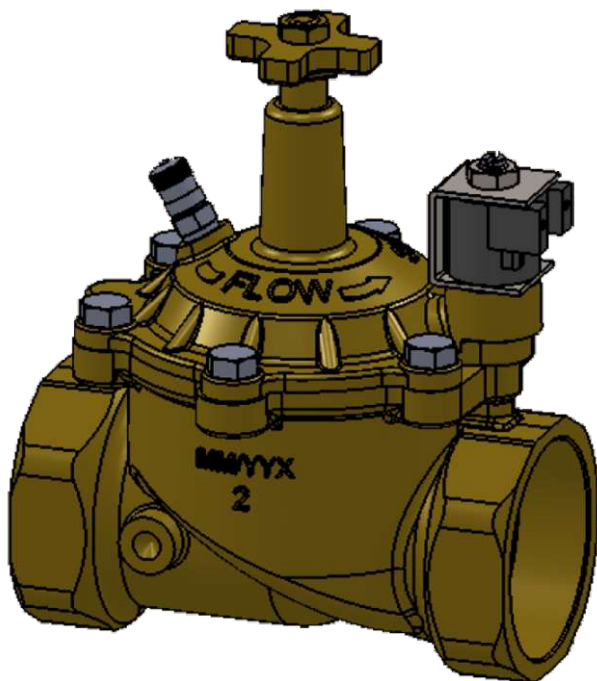
2" Model Depicted Below

Notes:

1. Index numbers are listed in numerical order on **Page 9** with corresponding part description, part numbers, and list prices.
2. Circular index numbers indicate that the part can be purchased separately.
3. Triangular index numbers indicate that the part is available as part of a sub-assembly or repair kit.

Sub-Assemblies & Repair Kits

- Repair Kits (all rubber & fiber parts) - 195
- Diaphragm Assembly - 196
- Top Assembly - 211
- Flow Control Assembly - 198
- Solenoid Assembly - 17



Model 950SDDW

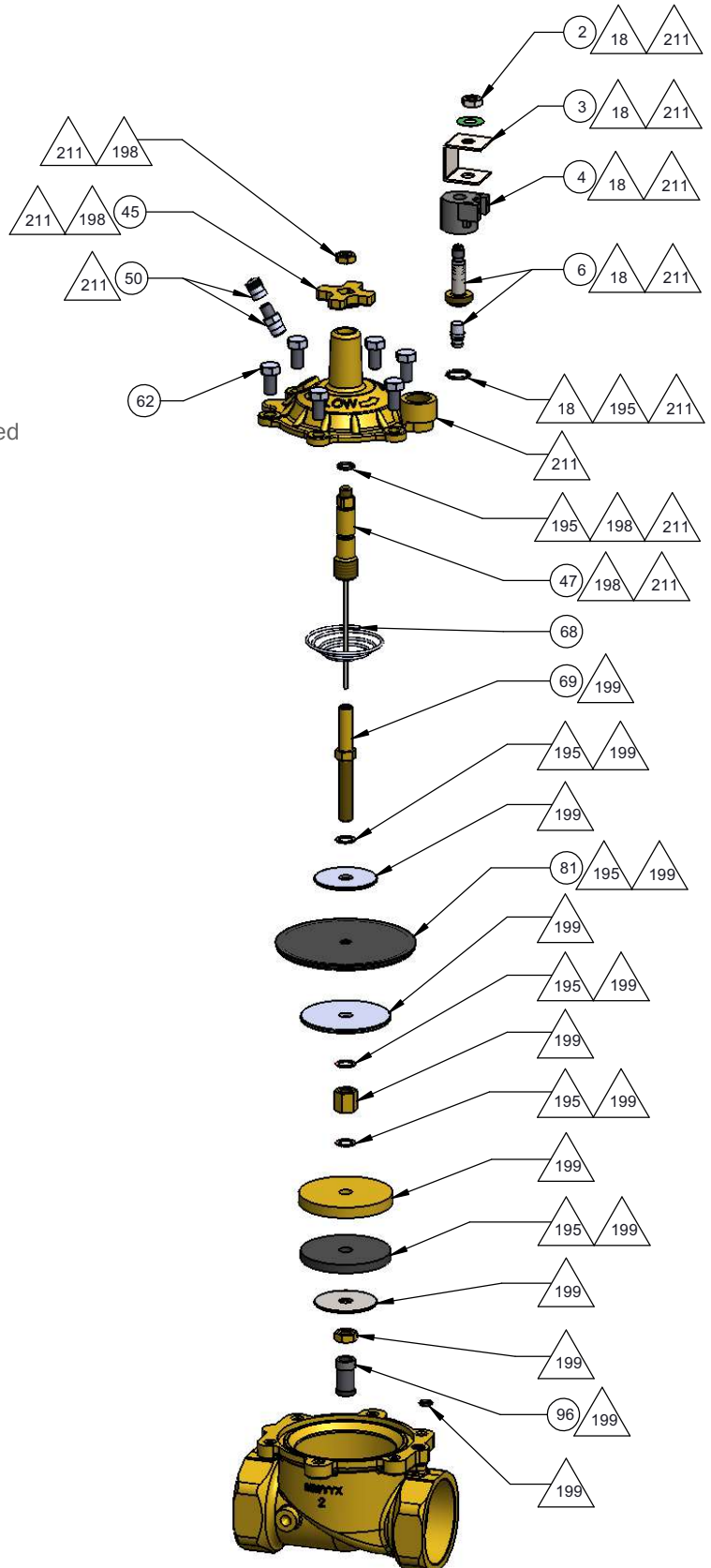
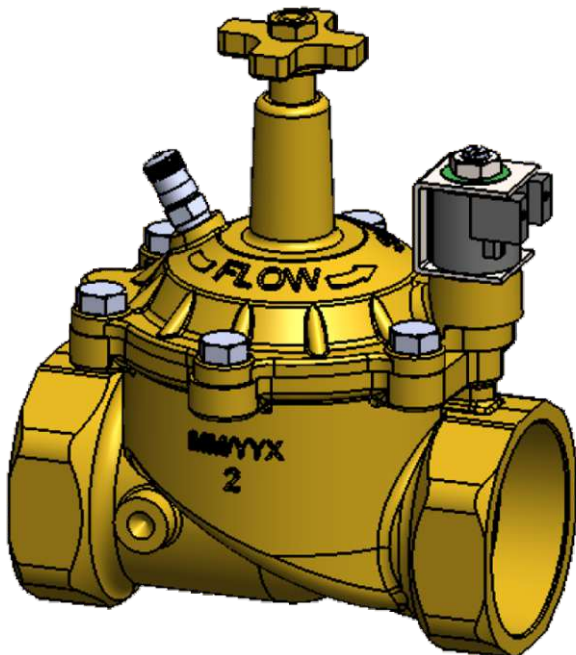
2" Model Depicted Below

Notes:

1. Index numbers are listed in numerical order on **Page 9** with corresponding part description, part numbers, and list prices.
2. Circular index numbers indicate that the part can be purchased separately.
3. Triangular index numbers indicate that the part is available as part of a sub-assembly or repair kit.

Sub-Assemblies & Repair Kits

- Repair Kits (all rubber & fiber parts) - 195
- Diaphragm Assembly - 199
- Top Assembly - 211
- Flow Control Assembly - 198
- Solenoid Assembly - 18



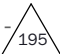
Model 950PRS

2" Model Depicted Below

Notes:

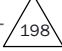
1. Index numbers are listed in numerical order on **Page 9** with corresponding part description, part numbers, and list prices.
2. Circular index numbers indicate that the part can be purchased separately.
3. Triangular index numbers indicate that the part is available as part of a sub-assembly or repair kit.


Sub-Assemblies & Repair Kits

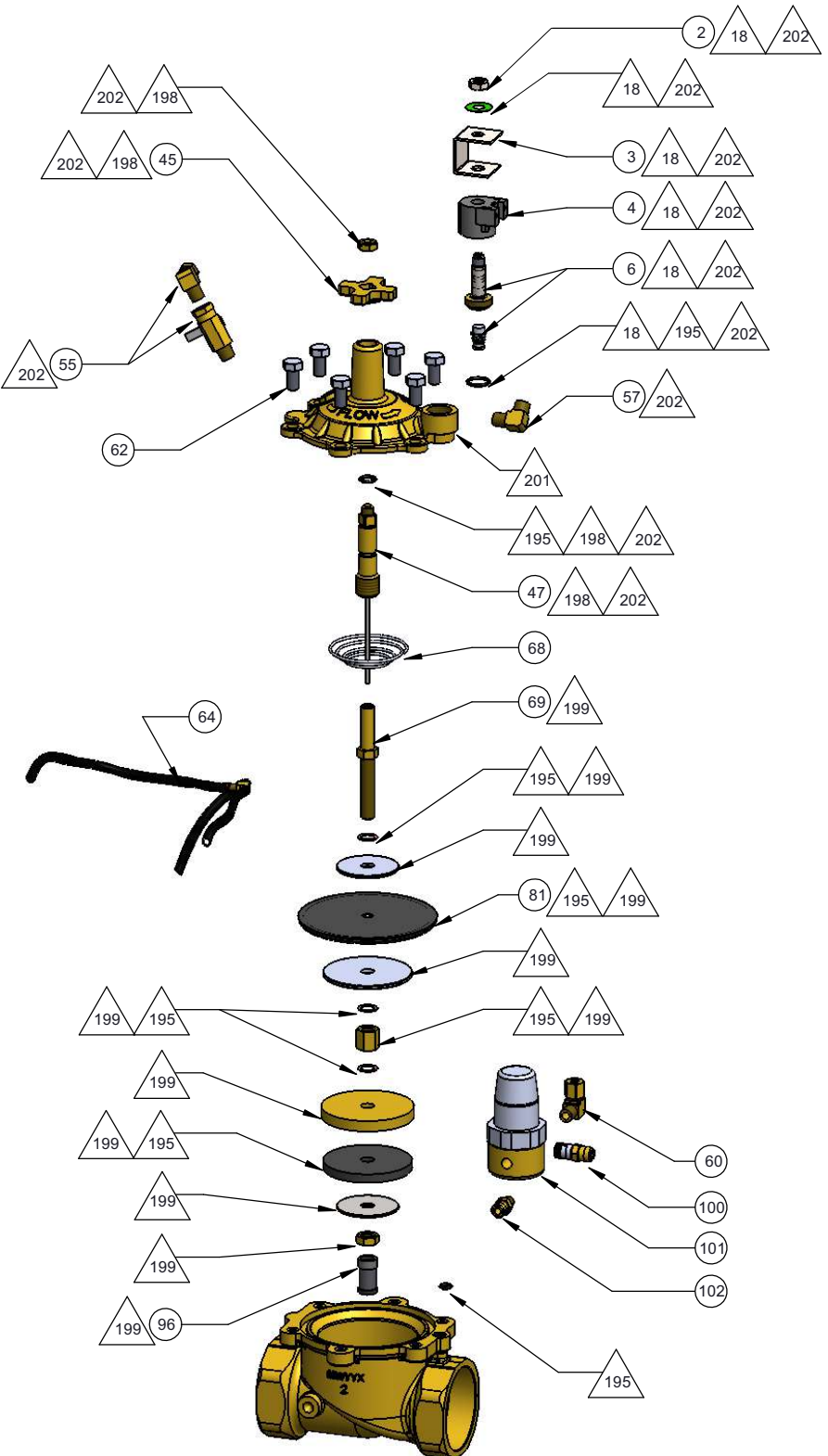
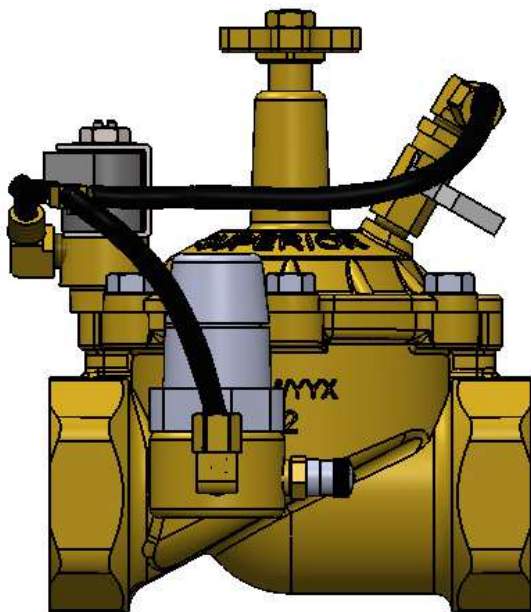
Repair Kits (all rubber & fiber parts) -  195

Diaphragm Assembly -  199

Top Assembly -  202

Flow Control Assembly -  198

Solenoid Assembly -  18



Model 950A

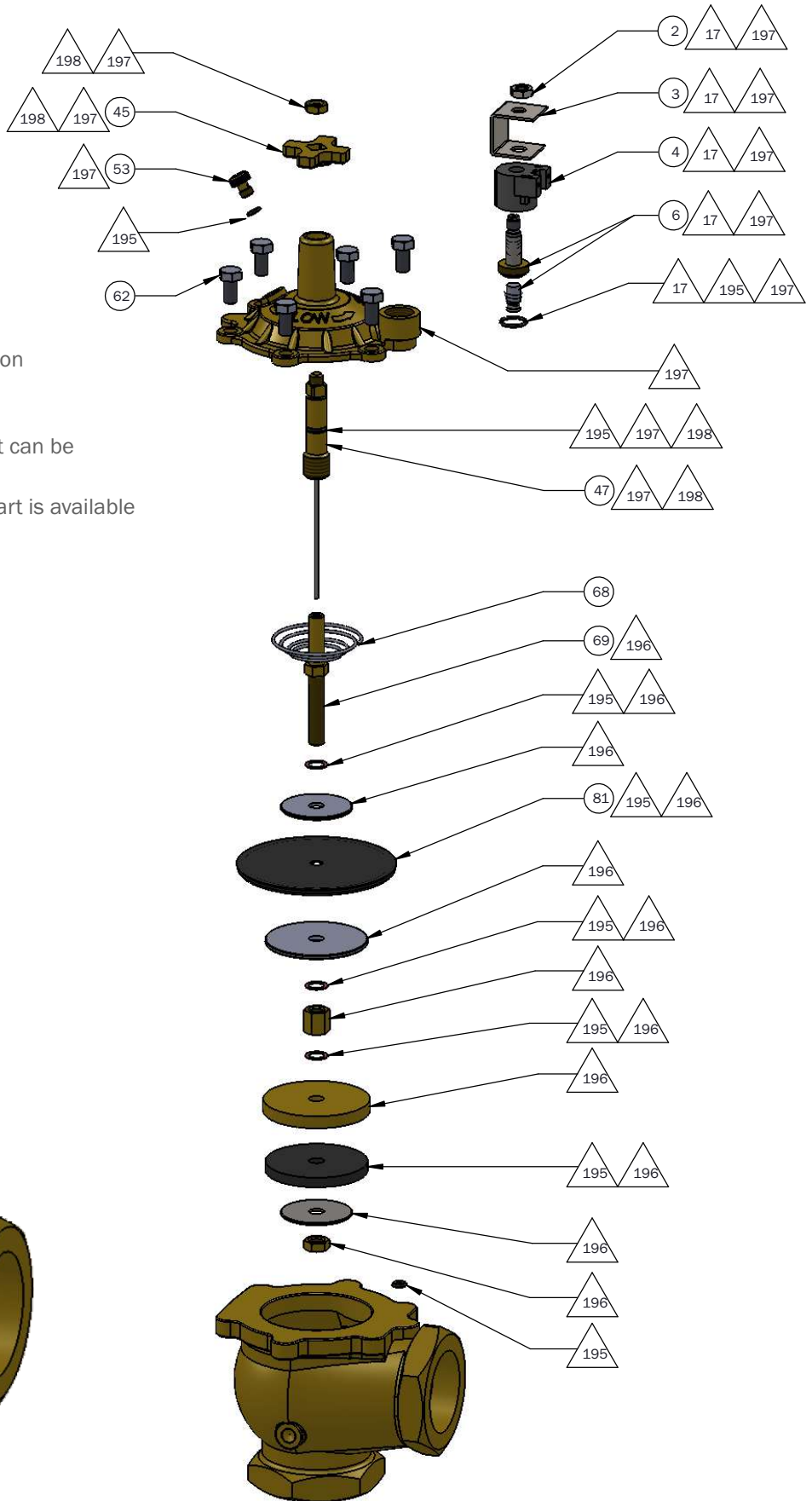
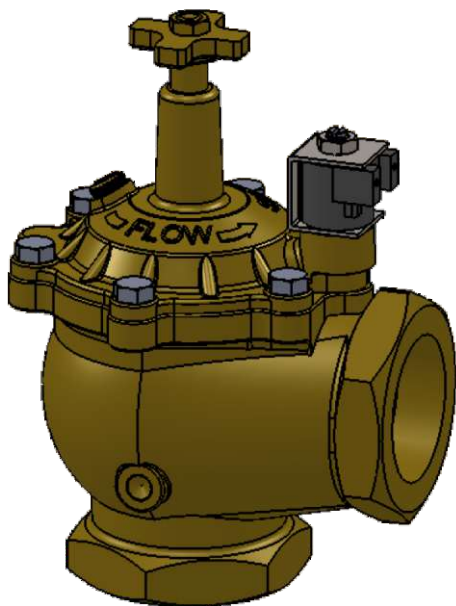
2" Model Depicted Below

Notes:

1. Index numbers are listed in numerical order on **Page 9** with corresponding part description, part numbers, and list prices.
2. Circular index numbers indicate that the part can be purchased separately.
3. Triangular index numbers indicate that the part is available as part of a sub-assembly or repair kit.

Sub-Assemblies & Repair Kits

- Repair Kits (all rubber & fiber parts) - 195
- Diaphragm Assembly - 196
- Top Assembly - 197
- Flow Control Assembly - 198
- Solenoid Assembly - 17



Index No.	Part Name/Description		3/4"	1"	1-1/4"	1-1/2"	2"	2-1/2"	3"
2	Solenoid Retainer Nut	Part No.	16003	16003	16003	16003	16003	16003	16003
		Price (\$)	1.16	1.16	1.16	1.16	1.16	1.16	1.16
3	Solenoid Farme		16009	16009	16009	16009	16009	16009	16009
			4.14	4.14	4.14	4.14	4.14	4.14	4.14
4	Solenoid Coil		16008	16008	16008	16008	16008	16008	16008
			13.37	13.37	13.37	13.37	13.37	13.37	13.37
6	Solenoid Stem and Plunger Assembly		16010-2A	16010-2A	16010-2A	16010-2A	16010-2A	16010-2A	16010-2A
			15.45	15.45	15.45	15.45	15.45	15.45	15.45
17	24 VAC Solenoid Assembly (950, 950A, 950SD)		16200	16200	16200	16200	16200	16200	16200
			27.84	27.84	27.84	27.84	27.84	27.84	27.84
18	24 VAC Solenoid Assembly (950DW, 950DWIB, 950PRS, 950SDDW)		16200G	16200G	16200G	16200G	16200G	16200G	16200G
			27.84	27.84	27.84	27.84	27.84	27.84	27.84
45	Flow Control Cross Handle			16034	16035	16035	16035	16035	16035
				7.88	5.54	5.54	5.54	5.54	5.54
47	Flow Control Stem (includes cleaning rod and o-ring)		20006-A	16081	16004-1	16004	16004	19000	19000
			5.54	6.46	15.82	13.31	13.31	41.85	41.85
50	Drain Cock and Cap (950SD, 950SDDW)		16506	16506	16506	16506	16506	16506	16506
			6.76	6.76	6.76	6.76	6.76	6.76	6.76
53	Drain Cock (includes o-ring) 950, 950A, 950DW		15013	15013	15013	15013	15013	15013	15013
			4.48	4.48	4.48	4.48	4.48	4.48	4.48
55	Manual Bleed Ball Valve (950DWIB, 950PRS)		16551	16551	16551	16551	16551	16551	16551
			50.22	50.22	50.22	50.22	50.22	50.22	50.22
57	Barbed L-Fitting (950PRS)		16527	16527	16527	16527	16527	16527	16527
			8.67	8.67	8.67	8.67	8.67	8.67	8.67
60	L-Fitting (950DWIB, 950PRS)		16500-1	16500-1	16500-1	16500-1	16500-1	16500-1	16500-1
			11.31	11.31	11.31	11.31	11.31	11.31	11.31
62	Diaphragm Cap Bolts		16042	16042	16041	16041	16041	16041	16041
			1.01	1.01	1.01	1.01	1.01	6.06	6.06
63	Tubing (includes compression nuts) 950DWIB			16597	16598	16599	16599	16600	16600
				5.03	5.03	5.75	5.75	5.87	5.87
64	T-Tubing Assembly (includes compression nuts) 950PRS			16513	16514	16514	16514	16515	16515
				13.54	13.83	13.83	13.83	11.99	11.99
68	Diaphragm Spring		16050	16051	16051	16052	16052	19017	19017
			1.04	1.42	1.42	1.68	1.68	2.32	2.32
69	Diaphragm Shaft w/insert		16013A	16014A	16015A	16016A	16016A	19005-2	19005-2
			29.01	29.01	29.01	29.01	29.01	31.64	31.64
81	Diaphragm		16055	16056-A	16057RW	16058	16058	400028	400028
			6.33	8.57	12.13	16.81	16.81	58.53	58.53
96	Self Flushing Filter (950DW, 950DWIB, 950PRS, 950SDDW)		16540	16540	16540	16539	16539	16539H	16539H
			5.54	5.54	5.54	5.81	5.81	6.94	6.94
100	Schrader Valve (950PRS)			16537	16537	16537	16537	16537	16537
				15.75	15.75	15.75	15.75	15.75	15.75
101	Regulator (950PRS)			16525	16525	16525	16525	16525	16525
				68.88	68.88	68.88	68.88	68.88	68.88
102	1/8" Hex Nipple (950PRS)			16524	16524	16524	16524	16524	16524
				0.96	0.96	0.96	0.96	0.96	0.96
195	Repair Kits (all rubber and fiber parts)		17308	17309	17310	17311	17312	17313	17313
			10.81	13.97	16.48	24.81	26.87	87.72	87.72
196	Diaphragm Assembly (950, 950A, 950SD)		16211	16212	16213	16214	16215	16216	16216
			24.65	32.11	40.61	73.32	79.32	294.47	294.47
197	Top Assembly (950, 950A)		16201	16202	16203	16204	16205	16206	16206
			48.64	67.89	87.79	97.02	97.02	290.75	290.75
198	Flow Control Assembly		16206	16207	16208	16209	16209	16221	16221
			12.51	11.34	21.68	14.11	14.11	33.38	33.38
199	Diaphragm Assembly (950DW, 950DWIB, 950PRS, 950SDDW)		16211-L	16212-L	16213-L	16214-L	16205-L	16216-L	16216-L
			26.46	35.33	43.64	74.74	81.07	315.66	315.66
201	Top Assembly (950DW)		16201G	16202G	16203G	16204G	16205G	16206G	16206G
			48.64	67.81	87.79	97.02	97.02	290.75	290.75
202	Top Assembly (950PRS)			16202-M	16203-M	16204-M	16205-M	16206-M	16206-M
				108.94	126.45	135.05	135.05	342.24	342.24
207	Top Assembly (950DWIB)			16202-IB	16203-IB	16204-IB	16205-IB	16206-IB	16206-IB
				106.43	126.28	135.52	135.52	332.76	332.76
211	Top Assembly (950SD)			16202-SD	16203-SD	16204-SD	16205-SD	16206-SD	16206-SD
				76.73	96.56	105.82	105.82	300.36	300.36

SMG - Buckner/Superior Limited Trade Warranty

Buckner/Superior warrants to its trade customers that its products will be free from original defects in material and workmanship for a period of time (commencing on the date of original sale to the trade customer) as follows:

3 YEARS for all Buckner/Superior trademarked products, which include:

- Brass/Plastic body valves
- Brass/Plastic automatic adaptors
- Brass quick coupling valves, keys, and hose swivels
- Brass manual angle valves
- Brass above-ground impact sprinklers
- Brass spray nozzles
- Sterling controllers

2 YEARS for all other products.

Note: Solenoids and pressure gauges are warranted for three years.

This warranty applies only to Buckner/Superior products which are installed as specified and used as intended for irrigation purposes. This warranty applies only to catalogued products which have not been altered, converted, damaged, misused, or misapplied. This warranty does not cover products adversely affected by the system into which the products are incorporated, including improperly designed, installed, operated, or maintained systems, or systems using water containing corrosive chemicals, electrolytes, sand, dirt, silt, rust, and scale. This warranty does not cover component failures caused by lightning strikes, electrical power surges, or damage caused by freezing environments. Buckner/Superior's liability is limited to the repair and/or replacement at Buckner/Superior's sole discretion of products which are returned prepaid through the trade customer to the factory and found by Buckner/Superior to be defective, but in no event shall Buckner/Superior's liability exceed the selling price of the product.

Buckner/Superior makes no other warranties, expressed or implied. No representative, agent, or distributor or other persons has the authority to waive, alter, or add to the printed provisions of this warranty, or to make representation of warranty not contained herein. The sole and exclusive remedy against Buckner/Superior is limited to repair or replacement; Buckner/Superior is not liable for consequential, incidental, indirect, or special damages, including but not limited to labor to inspect, remove, or replace products, vegetation loss, costs of substitute equipment or services, property damage, loss of use or loss of profits; nor is Buckner/Superior liable for economic losses, lost profits, consequential damages or damage to property arising out of Buckner/Superior's negligence or based on strict liability in tort.

The user and/or trade customer agrees to the limitations and exclusion of liability of this warranty by purchase or use of Buckner/Superior products.

Some states do not permit the exclusion or limitation of incidental or consequential damages or of implied warranties. Therefore, some of the exclusions or limitations may not apply to you.

Buckner/Superior reserves the right to redesign, alter or modify its products and shall incur no liability if a trade customer's inventory of Buckner/Superior goods becomes obsolete. Alterations, modifications, and redesign of a product shall not be evidence that the previous product design was defective and the user and/or trade customer so agrees by purchase or use of Buckner/Superior products.



brands of Storm Manufacturing Group, Inc.

Storm Manufacturing Group, Inc.
23201 Normandie Ave. Torrance, CA 90501
www.BucknerSuperior.com

Phone: 310.326.8287
Toll: 800.210.2525
Fax: 310.326.8310